

PLAYBILL®

BROTHERS PLAY

JAMIE WOLLRAB

ROB NAGLE

JEFFREY NORDLING

WRITTEN BY MATTHEW DOHERTY

BROTHERS PLAY

DIRECTED BY JAMES ECKHOUSE

LEGACY LA | 1350 SAN PABLO STREET, LOS ANGELES CA 90033

JANUARY 14TH-FEBRUARY 5TH

THURSDAY-MONDAY @ 8PM, SUNDAY @ 3PM

www.brothersplay23.com

Break With Tradition Productions

The Legacy

Jan 14th - February 5th

BROTHERS PLAY

Written by Matthew Doherty

Directed By James Eckhouse

with

Jamie Wollrab Jeffrey Nordling Rob Nagle

and

Aaron Lyons

Content Advisory

What you are about to witness contains haze, strobe effects, and a lot of hay. There are references to traumatic sexual events, abuse, neglect, drug use, physical and emotional violence, like a lot of bad words that require multiple Hail Marys; Oh, and an ornament will get smashed. So if any of this stuff causes you unwanted physical or emotional stress, you might want to consider grabbing a taco instead.

Produced By

Matthew Doherty
Jeff Kemperman
Sara Newman

James Eckhouse
Debbie Hoy
Anna Villella
Devon Esrick

Matthew Goodman
Cara Christian
Emree Franklin

Creative Team

Justin Huen
Myllette Nora
Veronica Mullins Bowers

Steve Rankin
Kimberly Sanchez Garrido
Dana Swartz

Jeff Lorch
Danielle Mead
Cara Christian

Concession Donations

Robyn Schrieber J&J
Snacks

Sets
Eco Sets

PR Representative
Ken Werther

"I made a snowman and my brother knocked it down and I knocked my brother down and then we had tea."

- Dylan Thomas, *A Child's Christmas in Wales*

For J.P. and Patrick Wall

THANK YOU SO MUCH TO ALL OUR 285 DONORS WHO MADE THIS POSSIBLE! YOU KNOW WHO YOU ARE :)

PHOTOS



Jamie Wollrab (Thomas)



Jeffrey Nordling (Jude)



Rob Nagle (Francis)



Jamie Wollrab & Jeffrey Nordling
(Thomas & Jude)

PHOTOS



Jamie Wollrab & Jeffrey Nordling (Thomas & Jude)



Jeffrey Nordling, Jamie Wollrab, Rob Nagle. (Jude, Thomas, Francis)

CAST

Cast Members

Thomas Jamie Wollrab
 Jude Jeffrey Nordling
 Francis Rob Nagle

Production/creative

Director/ Producer James Eckhouse
 Writer/ Producer Matthew Doherty
 Producer Jeff Kemperman
 Producer Debbie Hoy
 Producer Matthew Goodman
 Producer Ann Villella
 Producer/ Social Media Marketing Cara Christian
 Producer Emree Franklin
 Producer Sara Newman
 Producer Devon Esrick
 Stage Manager Kimberly Sanchez Garrido
 Assistant Stage Manager/ Assist Dir Sara Newman
 Stage/ Lighting Design/ Technical Director Justin Huen
 Assistant lighting designer/ Set designer/ Technical director Dana Swartz
 Costume Design Mylette Nora
 Sound Design/Video Design Veronica Mullins Bowers
 Fight Choreography Steve Rankin
 Press Representative Ken Werther
 Web Design Danielle Mead
 Production Photographer Jeff Lorch

Understudy/Swing

Jude/Francis Aaron Lyons

BROTHERS PLAY

WHO'S WHO



Jamie Wollrab

as Thomas

Recent stage credits include Stockholm, Mamma Metal, Nocturne, and The French Waitress. Other theatre includes Celestial Events, Gruesome Playground Injuries, The Glass Menagerie, Red Light Winter, North of Providence, Mud, and Miss Julie. He is a member of IAMA Theatre Company and the Artistic Director of The Triptych Theatre Group. Film credits: he co-wrote and starred in Pilgrimage; also, I Won't Say I Love You, Punching Bag, and Always Remember Me.



Jeffrey Nordling

as Jude

Jeffrey Nordling was seen in Richard Greenberg's Take Me Out at The Geffen as well as the premiere of Lewis And Clark Reach The Euphrates at the Mark Taper Forum. His other regional credits include The Old Globe, The Oregon Shakespeare Festival and many others. His New York credits include Shakespeare In The Park, The Public Theatre and CSC. He has been a member of The Antaeus Company since the beginning and has participated in many productions and projects there including Uncle Vanya and The Autumn Garden.

Jeffrey can be seen on So Help Me Todd on CBS and the Apple TV limited series Five Days at Memorial and is best known to audiences for his role opposite Laura Dern in the Emmy-winning HBO series Big Little Lies. He can be seen in Clint Eastwood's Sully and Showtime's I'm Dying Up Here. Also seasons on 24, Desperate Housewives, Body Of Proof, Rake, Killer Women and the films Tron, Home Of The Brave, Surfer Dude, Flicka and Flight 93. (*member of AEA)



Rob Nagle

as Francis

Theatre credits include Church and State, Of Good Stock, I Love to Eat, and productions at Denver Center for the Performing Arts, Pasadena Playhouse, Mark Taper Forum, Centerstage, The Old Globe, and Shakespeare Theatre Company. Film credits include Alien Vacation, To Hell and Gone, Bad Samaritan, First Love, Mother's Day, Fishing Naked, New Year's Eve, The Soloist, Fun with Dick and Jane, Cellular. Television credits include NCIS: Los Angeles, Batwoman, Mom, Dynasty, NCIS: New Orleans, Little Fires Everywhere, Modern Family, Superior Donuts, The Librarians, Grey's Anatomy, CSI: Crime Scene Investigation, Criminal Minds, Castle, Major Crimes, Harry's Law, Mad Men, Cold Case, Eli Stone, Studio 60 on the Sunset Strip, Without a Trace, Everwood, Buffy the Vampire Slayer, The Guardian, Dawson's Creek. (*member of AEA)

WHO'S WHO



Ken Werther

Press Representative

KEN WERTHER PUBLICITY has been a staple in the Los Angeles performing arts community since 1982. Public relations, producing, directing. Producer: *All Your Hard Work* (Brimmer St. Theatre Company); *The Good Boy* (LATC); *A Kind of Kind* (Celebration Theatre @ Atwater Village Theatre); the Queer Classics productions of *The Importance of Being Earnest* and *The Taming of the Shrew*. Assistant director: *Stop the World, I Want to Get Off* (Musical Theatre Guild); *The Women of Brewster Place* (Celebration Theatre); *The Woodsman* (Coourage Theatre Company). For more, visit www.kenwerther.com.

Cara Christian

Producer/ Social Media Marketing

Cara is an artist and producer working in television, film, and theatre. She is fiercely passionate about artistic expression and strives to dedicate her life to storytelling through both visual and performing arts.

WHO'S WHO



Jeff Kemperman

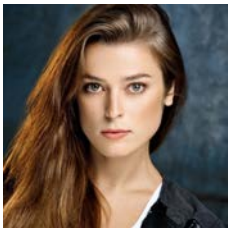
Jeff Kemperman is a former professional mascot, recovering attorney, and a native of Grand Rapids, MI. After 15 years in the courtroom, Jeff left behind the glitz and glamour of the upper Midwest to move to LA and go back to school. He is currently a Film Producing student at DePaul University and doesn't miss the practice of law even remotely. As a backup goalie, Jeff met Matt Doherty at an incredibly important late-night bronze league hockey game. Friendship blossomed and Matt asked Jeff to help produce *Brothers Play*. As Jeff was already in his second week of producing school, he felt more than prepared to take on the responsibility. Keeping Director James on-budget has been the toughest test of Jeff's young career.



Ann Villella

Producer

Ann Villella is so grateful to be a part of *Breaking With Tradition Productions*. Her love of theatre started on stage with some of her favorite roles being Olive in *Putnam County*, Cathy in *Last 5 Years* and Jen in *John & Jen*. Ann has also produced *Woman of Manhattan* and *Some Girls* for her own production company, *Sugar Fix* and *A Tangled Affair* as part of Morgan Wixson Theatre's 2021 *New Works Festival*.



Emree Franklin

Producer

Emree Franklin is an actress, writer and producer working in Film, TV and Theatre. She is passionate about all aspects of production, in front of and behind the camera and/or stage. Her film credits include *HEIST*, *War of the Worlds*; *Annihilation*, *Baggage Claim*, and *Secret Diary of a Cheerleader*. Theatre credits are *Farragut North (molly)*. She began her role as a producer on Jamie Wollrab's *Pilgrimage*, and has gone on to write, produce, and star in her own shorts *Mia*, *Serotonin*, and *The Sound* with her frequent collaborator Jason Meyer. Her upcoming film releases include *The Portrait* and *Baggage Claim*.

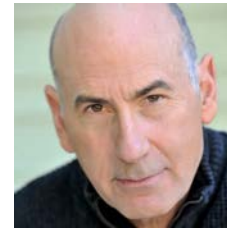
WHO'S WHO



Aaron Lyons

as Jude/Francis

Aaron Lyons (Prop Designer, Understudy Jude, Understudy Francis) does theatre. Lots of it. As an actor, director, designer, producer, stage manager, technical director, and crew member, he has over 250 credits on his National and International resumes. Most recent credits include: Film - *To The Beat 2!*, *To The Beat!*, *Switchback*. TV/ Web - *The Wasteland*, *Company*; Theatre: *Measure For Measure* (Antaeus), *Pulp Shakespeare*, *Delusion* 2015-2019 Seasons (Immersive Theatre).



James Eckhouse

Director/ Producer

Director James Eckhouse has had a varied and distinguished career as an actor and director in theatre, film, and television, for over 40 years. Theatre credits include plays on Broadway, Off-Broadway and in most of the nation's regional theatres including Geffen Playhouse, Mark Taper Forum, The Pasadena Playhouse, and The Old Globe. Film credits include *A Simple Wedding*, *The Avengers*, *S.W.A.T.*, *Defending Your Life*, *84 Charing Cross Road*, *Cocktail*, and *Big*. TV credits include *Beverly Hills 90210*, *Chicago Med*, *The Rookie*, *Station 19*, *The Affair*, *Code Black*, *NCIS*, *Major Crimes*, *The Good Wife*, *Southland*, *Criminal Minds*, *The West Wing*, and *Once and Again*. TV directing credits include *Beverly Hills 90210* and *Once and Again*. He has directed plays at The Pasadena Playhouse, *Matrix*, *IAMA*, *Odyssey*, and the *Garry Marshall Theatre*.



Matthew Doherty

Writer/ Producer

Playwright Matthew Doherty studied writing and theatre at Northwestern University. Nicholl Academy Screenplay semi-finalist, Golden Voice quarter finalist, AFF second rounder, *Screencraft* and *Final Draft Big Break* semi-finalist, former moderator of LA Writer's lab, and NYFRINGE alum. He has ghost-written for Academy Award-nominated directors, works as a story consultant, and facilitates writing groups in residential treatment facilities. His work has been read at the Antaeus Theatre Lab Series, *IAMA*, *Rogue Machine*, *VS*, *The Road*, *Sacred Fools*, and the famed *Actor's Studio*. His *House Across the Street* was named finalist for the BPP Woodward Newman Award and *Persuasion* advanced into later round consideration with Berkley Rep's *Ground Floor*.

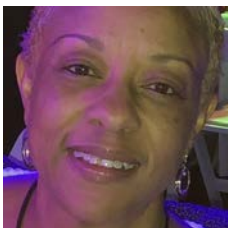
WHO'S WHO



Justin Huen

Stage/ Lighting Design/ Technical Director

JUSTIN HUEN is an award-winning Los Angeles actor/director/designer. He most recently starred as Pete Steele in the Zoom series *Isolation Inn*, and was seen in *Apple Season*, both with Moving Arts. Some of his favorite theater credits include, *Death and Cockroaches* (Chalk Rep.), *Mojada* (Getty Villa), *El Nogalar* (Fountain Theatre), *Farragut North* (Geffen), *Electricidad* (Mark Taper), *Strike-Slip* (Humana), *Stones* (Kirk Douglas), *Zorro* (TheatreWorks), *Damn Yankees* (Madrid Theatre), *My First Radical* (Ojai Playwrights Festival), *Dias Y Flores* (Company of Angels), *dAWGS* (Ivar Theatre), *The Legend of Jane & Joe* (Ricardo Montalban Theater), and starred as Oedipus in *Oedipus El Rey* (Boston Court), for which he received Ovation and Weekly award nominations. Justin has been seen in many Films and TV shows including *The Terminal List*, *Shameless*, *Justified*, *Weeds* and *Dexter*. Justin is currently directing and producing the World Premiere of *Lolo* at Company of Angels.

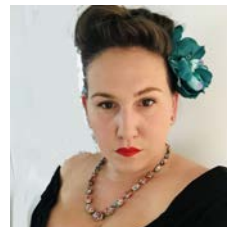


Mylette Nora

Costume Design

MYLETTE NORA (Costume Designer) Ovation Award and NAACP Theatre Awards for best costumes, listed in the honors edition of The Cambridge Registry of Who's Who Among Executive and Professional Women, works world wide consists of television, film, video and stage, and was seen nightly on "The Tonight Show" with Jay Leno and now "You Bet Your Life" with Jay Leno and Kevin Eubanks, and weekly on "Jay Leno's Garage". "Remember Me" the Mahalia Jackson movie! The famed artist Synthia St. James noted Mylette as being the inspiration for her world renowned painting "Ensemble" which graced the cover of the best selling novel "Waiting To Exhale" by Terry McMillan. Mylette's designer lines are, doggie wear, www.FromTheHeartDoggieWear.com, heirloom dolls, "My Mind's Eye", and now face mask by, Mylette!

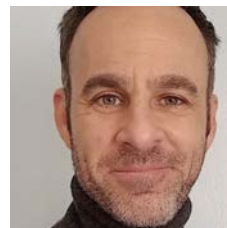
WHO'S WHO



Veronica Mullins Bowers

Sound Design/Video Design

Veronica Mullins Bowers (She/Her) is a California native. She studied at California Institute of the Arts and Golden West College. She has worked venues around the world including Edinburgh Fringe, The Geffen Playhouse, Union Station LA, and Museum of Latin American Art. Her favorite collaborations are Kronos Quartet, Cornerstone Theater Company, Triptych Theater Company, Invertigo Dance Company, and The Industry Opera. She spent several years designing for Walt Disney Imagineering, creating soundtracks for theme parks all over the world. Specializing in fantastical, musical, and technology-infused theater and interactive design, she uses her backgrounds in music and electronics to create unique experiences.



Matthew Goodman

Producer

Matthew Goodman began his studio-feature journey under Cameron at Lightstorm Entertainment then on to Lucasfilm/THX during the prequel-era. His multi-decade journey in film and stage has allowed him to work creatively with his heroes, who directly inspired him to pursue Screenwriting & Producing as well as mentoring new talent as a Development & Production consultant. His many film credits include *Titanic*, *Whacked!* and *Shrek* as well as his 1st foray in theatre as Co-Producer of "Sci-Fest". His upcoming film projects as Executive Producer include "Liberated" and "Reel Life: The Untold Story of the Lucasfilm Theatre Alignment Program".