



PRESENTS THE WEST COAST PREMIERE OF

POCATELLO

by

SAMUEL D. HUNTER

featuring

**EDEN BROLIN, ANNE GEE BYRD, MATTHEW ELKINS, REBECCA LARSEN,
TRACIE LOCKWOOD, ROB NAGLE, JUSTIN OKIN, MELISSA PALADINO,
TREVOR PETERSON, JEN POLLONO & MARK L. TAYLOR**

SCENIC DESIGN

STEPHANIE KERLEY SCHWARTZ

COSTUME DESIGN

ELIZABETH A. COX

LIGHTING DESIGN

RIC ZIMMERMAN

SOUND DESIGN

CHRISTOPHER MOSCATIELLO

PROP MASTER

BETHANY TUCKER

ASSISTANT SCENIC DESIGNER

HAZEL KUANG

PRODUCTION MANAGER

AMANDA MAUER

CASTING

VICTORIA HOFFMAN

TECHNICAL DIRECTOR

DAVID A. MAUER

ASSISTANT DIRECTORS

TRACEY SILVER & FRANK WEIDNER

STAGE MANAGER

RAMÓN VALDEZ

PRODUCED BY

JOHN PERRIN FLYNN & ELINA de SANTOS

DIRECTED BY JOHN PERRIN FLYNN

Playwrights Horizons, Inc., New York City,
produced the World Premiere of *Pocatelto* Off-Broadway in 2014.

Pocatelto was originally conceived and developed under the title *When You're Here...*
at the Williamstown Theatre Festival, Jenny Gersten, Artistic Director
and further developed at Geva Theatre Center, Rochester, New York

Pocatelto is presented by special arrangement with SAMUEL FRENCH, INC.

Opening Night February 20, 2016

Rogue Machine at The MET Theatre 1089 N. Oxford Ave, Los Angeles, CA 90029

A Letter From the Artistic Director

A theatre is a community and all of you who have belonged to Rogue Machine – whether you’ve seen one play or ten; whether you’ve come to one *Rant & Rave* or almost all of them – are part of that community. As long as you come with us, we have not really moved. We are in this new venue, yes, but we will still be who we are and hope to be.

This is a transition year for us but we will keep it exciting for you. Tonight you are seeing Samuel D. Hunter’s *Pocatello* – Those of you who are not new to Rogue Machine know Sam’s work. This is the third play of the MacArthur Fellowship winner we have done including last year’s much ballyhooed *LA Time’s* Critic’s Pick production of *A Permanent Image* and 2013’s award-winning *A Bright New Boise*. I had *Pocatello* in mind for some time in the future, perhaps 2017, but, when I walked into the MET and sat in the theatre for the first time, I knew this was the play to begin our new beginning.

We’ll follow *Pocatello* with Greg Kalleres’ *Honky* which will open in late April or early May. It’s another play we’ve wanted to do that is a perfect fit for this new space. The *New York Times* called *Honky* “a daffy treat, irreverently tackling a subject that appears destined to be forever uncomfortable: race” that “keeps you laughing from start to finish.” *Honky* will be directed by Gregg Daniel, the Artistic Director of the Lower Depth Theatre Ensemble.

Rant & Rave will also keep happening here in the new space – the next chapters will be on March 14th and April 11th. Mark your calendars now and look for other upcoming Rogue Machine treats including some readings of new plays and upcoming late night and *Off-the-Clock* productions.

Thanks for staying with us.

- John Flynn

Rogue Machine Proudly Announces The Henry Murray Fund

The Henry Murray Fund was created to honor our dear friend and Rogue Machine Theatre founding member Henry Murray, who passed away in December 2014. Henry was a talented playwright and gifted dramaturg. Rogue Machine produced three World Premieres by Henry including *Treefall* and *Three Views of the Same Object*, both of which have had significant subsequent productions. Henry was Rogue Machine's first Literary Manager and he created The Dramaturg's Table, Rogue Machine's ongoing new play development program. The Henry Murray Fund was created to nurture and support playwrights and new play development, two things Henry cared about deeply. If you wish to support this mission, we invite you to make a tax-deductible contribution to the Fund today.

TO DONATE ONLINE: Go to www.RogueMachineTheatre.com.

Click SUPPORT US and indicate a donation amount.

In the NOTES section, add "For the HENRY MURRAY Fund."

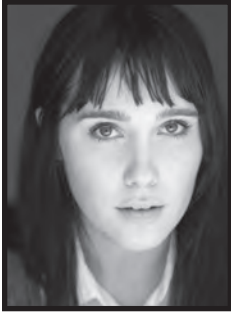
TO DONATE BY MAIL: Make check payable to ROGUE MACHINE THEATRE and add "For the HENRY MURRAY Fund" on the MEMO line and mail to:

Rogue Machine Theatre
12405 Venice Blvd. #153
Los Angeles, CA 90066

HENRY MURRAY FUND CONTRIBUTORS

Ambrosia Knutson Associates	Betsy Hall & Sandy Keaton	Bruce & Linda Porter
Mary Appleton	Angelica Huston	Thomas Proctor
William Brady & Marni Ayers	Martha Hertsberg	James Rasmussen & David Rinehart
Lisa Beck	Jennifer Howard & Robert Schwentke	Stephanie Ramer
Mitch & Danielle Bloch	Susan Moss Homola	Lee & Susan Wertheimer
Alexandra Rebecca Borys	Gary Ireland & Elizabeth Zarlengo	Gail Rogers
Ann Buck	Amber Ireland	Gary Rosen & Holly Goldberg Sloan
Anne Gee Byrd	Linda Janger	Rita Rubin
K Callan	Manson Jones & Susan Fitzgerald	David A. & Karen Richards Sachs
Marcy Carsey	Gary & Enid Freund	Tom Safran
Arline Chambers	Mark Freund & Trice Koopman	Whitney Sander
Chaspen Foundation	Trevor King	Carol Schoen
Christopher Craig	Laurie Lathem	Nadine Semer
Jean Craig	Martin Leon of Alisal Builders Corp	Patricia Shanks
Michael Cohen	Martin Leffler	Peggy Shinner
Ry & Susan Cooder	Brian Letscher	Gabriel Simon
Hannah Cox	John Lichter & Linda Stonerock	Calvin J. Sloan
Elina de Santos	David Linde & Felicia Rosenfeld	Maxwell Sloan
Jeffrey & Kirsten Dermer	Nancy Linehan Charles	Sold Out Crowd
Joan & Tom Dunsmuir	Lynn Lobban	Sherry Sonnett
AnnaLisa Erickson	Allan Mayer & Renee Vogel	Ari & Martha Swiller
Jeffrey Karoff & Nora Dvosin	Carol Meckler	Shane Valentino
John Flynn & Ann Bronston	Brian Nolan & Kadee Appleton	Miki Warner
Ben & Anna Forkner	Dottie O'Carroll	Lewin Wertheimer
Steffen & Deborah Foster	Penny Orloff	Mary Westerman
John Gray	Nina Paskowitz	Diane Williams & Jeff Doryland
Jerry & Adi Greenberg	Tony Pasqualini	Jack & Sandra Williams
Emily Hertzberg	Gary & Fre Pokoik	

Ensemble



EDEN BROLIN



ANNE GEE BYRD



MATTHEW ELKINS



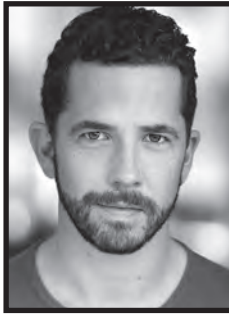
REBECCA LARSEN



TRACIE LOCKWOOD



ROB NAGLE



JUSTIN OKIN



MELISSA PALADINO



TREVOR PETERSON



JEN POLLONO



MARK L. TAYLOR

PRODUCTION STAFF

Assistant Stage Manager Yesenia Solis
Publicity Judith Borne
Social Media Corryn Cummins
Key Art Design Shawn Coogan
Scenic Artist Hillary Bauman



#PocatelloLA
@RogueMachineLA

Cast and Characters

EDDIE	MATTHEW ELKINS*
MAX	TREVOR PETERSON
ISABELLE.....	MELISSA PALADINO, JEN POLLONO
TROY	JUSTIN OKIN
DORIS	ANNE GEE BYRD*
NICK.	ROB NAGLE*
KELLY	REBECCA LARSEN*
COLE	MARK L. TAYLOR*
TAMMY	TRACIE LOCKWOOD*
BECKY	EDEN BROLIN
<i>Alternates</i>	
NICK	SHAD WILLINGHAM*
BECKY	MICHAELA SLEZAK



** Member of Actors' Equity Association,
The Union of Professional Actors and Stage Managers in the United States.*

*Alternates/Understudies: Actors never substitute for the listed players
unless a specific announcement is made at the time of the performance.*

**SETTING: The floor of a nation-wide Italian restaurant franchise in Pocatello, Idaho.
This performance will run WITHOUT AN INTERMISSION**

A Note From the Director

Samuel D. Hunter brings a poet's intuition and vision to his work. Before the story begins, Sam creates three dimensional worlds for his characters to inhabit, worlds where his characters are confronted with very familiar real life problems that affect who they are and how they act but may only be tangential to what the play addresses. In *Pocatello* we see the corporatization of America and the consequential loss of individual identity and how small towns shrink and wither away.

Eddie and his family are stuck. Something happened in the past, something that separated them from their community and themselves. In guilt and self-blame, anger and shame, and social isolation, rejected by the community, they enter an unspoken conspiracy of silence – a bargain which freezes them.

“to live in this world

*you must be able
to do three things
to love what is mortal;
to hold it*

*against your bones knowing
your own life depends on it;
and, when the time comes to let it go,
to let it go”*

-Mary Oliver, *New and Selected Poems, Vol. 1*

Who's Who

EDEN BROLIN (*Becky*)

Eden studied at The Neighborhood Playhouse School of Theatre in New York City. She's starred in countless productions on both the stage and screen alike most notably her lead role in the film *I Dream Too Much*, executive produced by Richard Linklater and an official selection at SXSW. Eden is extremely excited to be making her debut with Rogue Machine and thanks her parents, friends, and former teachers for their unending support.

ANNE GEE BYRD (*Doris*)

Rogue Machine: *A Permanent Image*, *Three Views of the Same Object* and *Four Places* (LADCC Award). As a member of The Antaeus Company: *Uncle Vanya*, *Mrs. Warren's Profession*, *Autumn Garden* and *Mother Courage* (LA Weekly Award). Other work: *The Savanna Disputation* at the Colony, *All My Sons* at the Matrix Theatre (LADCC Award), *Breadcrumbs* at Theater 150 in Ojai, and *I Never Sang For My Father* at The New American Theatre. Other appearances include the Mark Taper Forum, Geffen Playhouse, Pasadena Playhouse, LA Theatre Works, Odyssey, Andak Stage Co., South Coast Repertory, The Old Globe, Seattle Rep, La Jolla, ACT San Francisco, and the McCarter, among others.

MATTHEW ELKINS (*Eddie/Producing Director*)

As Rogue Machine's founding Producing Director, he produced *Need to Know*, *Blackbird*, *Yard Sale Signs*, *Stop Kiss*, our inaugural production *Compleat Female Stage Beauty*, and last season's award-winning production of *Cock*, in which he appeared. Other Rogue Machine appearances include *Falling* and Samuel D. Hunter's *A Bright New Boise* (LA Weekly Nomination) and *A Permanent Image*. He directed *MilkMilkLemonade* for Rogue Machine and *Raised in Captivity* for the PRT Co-op. He has acted on the stages of the Kennedy Center, Hollywood Bowl, Asolo Rep & the Utah Shakespearean Festival. MFA from Florida State University Asolo Conservatory.

REBECCA LARSEN (*Kelly*)

Rebecca is a longtime member of Sacred Fools and new member of Rogue Machine (RMT debut). Los Angeles stage: *different words for the same thing* CTG @ Kirk Douglas, *Watson*, *Forbidden Zone: Live From the Sixth Dimension*, *Occupation* at Sacred Fools, *Wreck of the Unfathomable*, *Mulholland Christmas Carol* @ Theatre of NOTE. TV credits include: *Desperate Housewives*, *Masters of Sex*, *The Exes*, *Veronica Mars*, *House*. Rebecca attended the Actor Training Program at the University of Utah, has served on the artistic committee at Sacred Fools Theatre and now co-curates their New Works Development program.

TRACIE LOCKWOOD (*Tammy*)

Tracie is a founding member of Rogue Machine and has been seen in *A Permanent Image* (LADCC Award nomination), *Bhutan*, *Compleat Female Stage Beauty* and *MilkMilkLemonade*. She is the producer of Rogue Machine's *Around-the-Clock* Play Festival. Other recent theatre: *Henry V*, *Birdbrain*, *The Turn of the Screw*, *Betty's Summer Vacation* and *Happy End* at Pacific Resident Theatre (where she is a member); *How the Other Half Loves*, *Small Tragedy* and *A Chorus of Disapproval* at the Odyssey; and *Vincent in Brixton* at the Pasadena Playhouse. Love to Michael, Eden, Eva Rose, and Adam for letting Mommy out of the house.

ROB NAGLE (*Nick*)

Proud member of Antaeus and the Troubies. Recent World Premieres of Meghan Brown's *The Kill-or-Dies*, Melissa Ross' *Of Good Stock*, James Still's *Appoggiatura*, and Samuel D. Hunter's *Rest*. Theater: South Coast Repertory, Denver Center Theatre Company, Portland Center Stage, Mark Taper Forum, Old Globe Theatre,

Centerstage, San Jose Repertory. Film: *Mother's Day, Fishing Naked, New Year's Eve, Life as We Know It, The Soloist, Fun with Dick and Jane, Cellular, American Wedding*. TV: *Grey's Anatomy, CSI, Criminal Minds, Castle, Major Crimes, NCIS, Mad Men, Eli Stone, Studio 60 on the Sunset Strip, Buffy the Vampire Slayer*. Training: Northwestern University. Wife: Heather Allyn. Pug: Roosevelt. Twitter: @nagdoggie Geek: www.robnagle.com

JUSTIN OKIN (*Troy*)

Rogue Machine: *Stop Kiss, MilkMilkLemonade, Monkey Adored and Cock* (associate producer). With Theatre of NOTE: *Entropy*, Theatre Movement Bazaar's *HotCat* (swing), and *Eat the Runt*. Other theater credits include *Khmer Amerika* (Lincoln Center's Directors Lab) Suzan-Lori Parks' *365Plays/365Days* (The Public) *The Elephant Room* (The Kirk Douglas) and *When They Speak of Rita* (A.C.T.). Film credits include *Hughes the Force* (featuring Kevin Smith), *Weeding Out* (Directors Choice award, Sacramento Film Festival) *Reality Check*, and *Loaf of Bread*. Justin is the associate director of the Road Theatre Company's annual Summer Playwrights Festival. He has studied at Sarah Lawrence College (B.A), A.C.T., and La MAMA.

MELISSA PALADINO (*Isabelle*)

Melissa a founding member of Rogue Machine and has been seen in *Lone-Anon* (One of *LA Weekly's* top ten of 2013), *Bingo with the Indians* and *Razorback*. Stage: *Awake & Sing!* (The Odyssey; Sage Award 2015 Best Ensemble), *The Sexual Lives of Savages* (Skylight Theatre Company), *Daddy Dies Well* (Padua Playwrights), *Sailor's Song* (LAByrnth Theater Company at The Public), *Fight Girl Battle World, Men of Steel, Living Dead in Denmark, The Vampire Cowboy Trilogy* (VCT Productions), *A Woman From the Past* (German Theater Festival). Film: *Loners, Fort Doom, 25 to Life, The Horribly Slow Murderer with an Extremely Inefficient Weapon*. XO PGF.

TREVOR PETERSON (*Max*)

Trevor most recently finished a role in *Sky* opposite Diane Kruger, Norman Reedus and Lena Dunham, which premiered at the Toronto International Film Festival. Other credits include -- Television: *The Vampire Diaries, CSI: Miami, 10 Dates From Hell* (TBS). Film: *Manifesto, Prom, Grizzly Park*. Theatre credits in Los Angeles include productions at the Ahmanson Theatre, Rogue Machine and Bootleg Theater. He is a graduate of the University of Southern California with a BFA in Acting, as well as the British American Drama Academy in London, England.

JEN POLLONO (*Isabelle*)

Jen has appeared at Rogue Machine in *Lost Girls, Dirty Filthy Love Story, Where the Great Ones Run, Compleat Female Stage Beauty*, three incarnations of *Shorts & Sweets*, and Steven Sater's *New York Animals*. She is a founding member of Rogue Machine and the Producing Director of their *Off-The-Clock* series. She is responsible for the multi-award-winning World Premiere of *Small Engine Repair*, which originated at Rogue Machine and opened Off-Broadway to rave reviews in 2013. Other Rogue Machine producing credits include *Dirty Filthy Love Story, Bingo With the Indians, MilkMilkLemonade, Lone-Anon, Paternus* and *Uploaded*. Love to John, Sophie & Jack.

MARK L. TAYLOR (*Martin*)

Though born and raised in Houston, Texas, Mark has spent the majority of his life in Los Angeles. Over the past forty years he has appeared in numerous television shows (from *MASH* to *High School Musical 2*), features (*Arachnophobia* to *Innerspace*), commercials (Cheer to HBO) and animated series (*Superman* to *Super Friends*). Theatre: *A Permanent Image* (Rogue Machine) and *Secrets of the Trade* by Jon Tolins (Ovation nomination). He has been fortunate enough to direct numerous original plays by some extraordinary writers in LA with enormously talented casts. "Working and learning from them has been one of the great gifts in my life."

SAMUEL D. HUNTER (*Playwright*)

Mr. Hunter's plays include *The Whale* (Drama Desk Award, Lucille Lortel Award for Outstanding Play, GLAAD Media Award, Drama League and Outer Critics Circle nominations for Best Play) and *A Bright New Boise* (Obie Award, Drama Desk nomination for Best Play), and his newest plays, *The Few*, *A Great Wilderness*, *Rest*, and *A Permanent Image*. He is the recipient of a 2014 MacArthur "Genius Grant" Fellowship, a 2012 Whiting Writers' Award, the 2013 Otis Guernsey New Voices Award, the 2011 Sky Cooper Prize, and the 2008 PONY/Lark Fellowship. His plays have been produced in New York at Playwrights Horizons, Rattlestick Playwrights Theater, Clubbed Thumb and Page 73, and around the country at such theaters as Seattle Rep, Victory Gardens, South Coast Rep, Williamstown Theatre Festival, The Old Globe, Woolly Mammoth Theatre Company and the Denver Center Theatre Company. A native of northern Idaho, Sam lives in NYC. He holds degrees in playwriting from NYU, The Iowa Playwrights Workshop, and Juilliard.

JOHN PERRIN FLYNN (*Director/Producer/Artistic Director*)

John is Rogue Machine's founding Artistic Director and he has produced all 30 of our mainstage productions. For RMT, he has directed the World Premieres of John Pollono's *Lost Girls* and Henry Murray's *Treefall*; Enda Walsh's *The New Electric Ballroom* and *Penelope*; Samuel D. Hunter's *A Permanent Image* and *A Bright New Boise*; *The Sunset Limited*, and our inaugural production, *Compleat Female Stage Beauty*. John was the Executive Producer and Director of Lifetime's long-running series *Strong Medicine* and has produced two other series and 14 television movies or miniseries including the Emmy-nominated *Burden of Proof*. In 2012, he received the Career Achievement Award for Theatre from the *LA Weekly*. John is a proud member of the Chickasaw Nation.

STEPHANIE KERLEY SCHWARTZ (*Scenic Design/Resident Designer*)

Rogue Machine: Scenery and/or Costumes for: *Nice Things*, *Penelope*, *Falling*, *One Night in Miami...*, *Blackbird* (*LA Weekly* Award), *Treefall* (*LA Weekly*, *Backstage* Garland Awards), ...*Stage Beauty* (Garland Award, Ovation nomination), among others. South Coast Repertory: Costume Design for *Reunion*. Theatre @ Boston Court: Scenic Design for *Shiv* and *Stupid Fucking Bird*. Pasadena Playhouse: *Pygmalion* (Scenery) and *Twelve Angry Men* (Scenery & Costumes). CTG/Mark Taper Forum: Costume Design for *The Lieutenant of Inishmore* and *Harps & Angels*. Sacred Fools: Scenic Design for *Absolutely Filthy*. Scenic Design for *Song of Extinction* (Winner *LA Weekly's* Production of the Year) for Moving Arts Inside the Ford. www.kerleydesign.com

ELIZABETH A. COX (*Costume Design*)

Recent designs include *Trevor* for Circle X Theatre Company. She has also designed for Rogue Machine, the Valley Performing Arts Center, the Los Angeles Philharmonic, Rubicon Theatre, Cornerstone Theater, the Matrix Theatre, the Whitefire Theatre, and the Actors Studio LA. Regionally, her costume designs have been seen at South Coast Repertory's Youth Conservatory, Cincinnati Playhouse, and The Music Theatre of Wichita. She is a professor at CSU Northridge and Santa Monica College.

RIC ZIMMERMAN (*Lighting Design*)

Previously at Rogue Machine: *Penelope*. Theatrical collaborators include: Circle X, The Fountain Theatre, Theatre of NOTE, Company of Angels, Theatre Forty, The Vagrancy, The Visceral Company, Civic Light Opera of South Bay Cities, The Neighborhood Playhouse, The Madrid Theatre and many others. Dance collaborators include: Helios Dance Theatre, Navarasa Dance Theatre, Rhapsody in Taps, Danza Floricanto, Viver Brasil, Theatre Bethune, Lula Washington, Louise Reichlin and Dancers, Keshet Chaim, and Lineage Dance among others. Corporate clients include: Samsung, Muse/Ique, ESPN, Verizon, Tinder, Google, Panasonic, Boeing and more.

CHRISTOPHER MOSCATELLO (*Sound Design*)

Christopher is an Ovation-nominated sound designer, composer, music editor and music director for theatre, television and film. TV credits include *The Walking Dead*, *Psych*, *Eureka*, *Human Target*, *The Cape*, *Caprica*, *Trauma*, and he has scored full series, specials and promos for National Geographic, The Discovery Channel, HBO, BBC, Animal Planet, MSNBC, The History Channel, and others. Theatre credits include The Kennedy Center, Arena Stage, Olney Theatre Center, Rogue Machine, Pacific Resident Theatre, the Odyssey Theatre, the Road Theatre, and he served as assistant conductor on the national tour of *The Phantom of the Opera*. Chris was formerly the Associate Artistic Director and Conductor of the Boston Chamber Ensemble.

BETHANY TUCKER (*Prop Master*)

Bethany Tucker is thrilled to be prop master for the first time for Rogue Machine. Most recently she was prop master for Boston Court's production of *Seven Spots on the Sun*, Circle X's productions of *ICU* and *Trevor*, the Los Angeles LGBT Center productions of *The Goat, or Who Is Sylvia?* and *The Laramie Project: Ten Years Later*.

ELINA de SANTOS (*Producer/Co-Artistic Director*)

Directing credits include the World Premieres of *Dirty Filthy Love Story*, *Yard Sale Signs*, *Razorback* and *Nice Things*, as well as *Falling*, *Stop Kiss* and *Bhutan*, all here at Rogue Machine. For West Coast Jewish Theatre: *New Jerusalem* and *Broken Glass*. For PRT: a workshop of *Galileo*, *Death of a Salesman*, *Orpheus Descending* (LADCC Award for Direction). At the Odyssey: *Awake and Sing!*, *The Blue Room* and *Misalliance*. She has directed at the Pasadena Playhouse and regionally at theatres including the Berkshire Theatre Festival and the Pittsburgh Public. In 2013, Elina received the LADCC Award for Career Achievement in Directing.

RAMÓN VALDEZ (*Stage Manager*)

Ramón received his BA from the USC School of Theatre where he emphasized in stage management. At Rogue Machine, Ramón has stage managed *Three Views of the Same Object*, *Monkey Adored*, *The New Electric Ballroom*, *A Bright New Boise*, *Falling*, *Lost Girls*, *Gruesome Playground Injuries*, *Penelope*, *Cock* and *A Permanent Image*. He is also partly responsible for the "...Gone Rogue" Calendars.

HAZEL KUANG (*Assistant Scenic Designer*)

Hazel is originally from Taipei, Taiwan. She designed her first stages there in the early 2000s. In 2010, she graduated from Cal-State Long Beach with a MFA in Scenic Design. She mainly designs sets but also participates in collective theater projects in various ways including theaters in Russia and Asia. She is a member of Rouge Machine and very happy to work on the show.

TRACEY SILVER (*Assistant Director*)

A Graduate of the Actors Studio MFA program at the New School in NY. Directing: *Awake & Sing* (Assistant Director, Odyssey Theatre), *Vivien* by Percy Granger, *Mr. Goldwyn* (w/ Mark Rydell) Actors Studio NY/LA, *The Road* (Directors Company-NY), Acting: *Someday* (Cornerstone Theater Co), *Elektra* (Actors Studio NY), *The Girl on the Via Flaminia* (Circle in the Square downtown), *The Wake of Jamey Foster* (Cherry Lane), *A View from the Bridge* (Shelton Theatre). TV: *The Sopranos*. She is a member of Rogue Machine Theatre & a Lifetime member of the Actors Studio Acting & Directing Units.

FRANK WEIDNER (*Assistant Director*)

Frank Weidner is thrilled to be assistant directing Pocatello, his first show with Rogue Machine. A company member of Will Geer's Theatricum Botanicum, acting credits there include *As You Like It*, *Lear*, *Much Ado About Nothing*, *The Royal Family*, *The Taming of the Shrew*, *Measure for Measure*, *The Women of Lockerbie*, and *A Midsummer*

Night's Dream. He also recently assistant directed and appeared in the Mine is Yours production of *The Winter's Tale*. www.frankweidner.com

VICTORIA HOFFMAN (*Casting*)

Victoria is a proud member of Rogue Machine, where she has been the resident Casting Director on *Lost Girls*, *Falling*, *Penelope*, *Gruesome Playground Injuries*, *Cock, Nice Things*, *A Permanent Image*, *Need to Know* and more. Recent casting projects include Padua Playwrights' *Villon* by Murray Mednick at the Odyssey and *Beyond Sight* for CRE Outreach. A veteran of commercial casting, she currently works as an associate and session director for Terry Berland Casting. As an actor, she has performed in two installments of *Rant & Rave*, and worked in Regional Theaters as varied as The Kodak, South Coast Repertory, Kansas City Rep, and Theatricum Botanicum.

AMANDA MAUER (*Production Manager*)

Amanda is a playwright, stage manager and occasional actress with a penchant for baking, crossword puzzles and peculiar physical activities. Several of her plays have been produced at Rogue Machine and beyond. As a founding member and long-standing Production Manager of Rogue Machine, she is delighted to be a part of another remarkable show. Love to all, but mostly to David.

DAVID A. MAUER (*Technical Director*)

For Rogue Machine, David produced and designed the set for Samuel D. Hunter's *A Permanent Image* and Rajiv Joseph's *Gruesome Playground Injuries*, which he produced at the Edinburgh International Fringe Festival this past August. David was awarded the 2013 *LA Weekly* Award for the scenic design of Rob Mersola's *Dirty Filthy Love Story* at Rogue Machine. He also designed the sets for John Pollono's *Small Engine Repair* and *Lost Girls*, and Samuel D. Hunter's *A Bright New Boise*. David is Rogue Machine's Technical Director and, more importantly, married to Amanda.

RICK BERNSTEIN (*Managing Director*)

Rick has worked in Los Angeles theatre for over 10 years in many management capacities. He has been the Managing Director at both The Road Theatre Company and Elephant Theatre Company, and he has also been a staff member at both The Colony Theatre and The Theatre @ Boston Court. He has served as a marketing consultant, grant writer and company manager for many companies and theatres throughout the area. Rick is also the Managing Director of Impro Theatre and is a graduate of Stanford University. He can be reached at rick.bernstein@roguemachinetheatre.com.

Special Thanks!

Tony Cowley and Tavern 1 in Malibu, Rog Fagle, Yesenia Solis
and William Dennis Hunt.

The videotaping or making of electronic or other audio and/or visual recordings of this production or distributing recordings on any medium, including the internet, is strictly prohibited, a violation of the author's rights and actionable under united states copyright law. For more information, please visit: www.samuel french.com/whitepaper

The Show Can't Go On Without You!

Dear Friends,



Whether this is your 41st play or your first at Rogue Machine, welcome to the family and our ninth season. By coming here today, you've joined a growing community of theatregoers in Southern California who are looking for new work – adult drama, the stories of today, and the voices of contemporary writers from the English-speaking world, perhaps from London, Dublin, New York, Chicago, or especially, Los Angeles.

This is my third season as Board Chair, and as an architect, one of my primary long-term goals is a permanent home, all our own, as exciting as the plays we produce.

So bring your friends, talk about us, buy season tickets, endow a chair, join the *Founder Circle*. Hey, put your name on a building.

A handwritten signature in black ink that reads "Lewin Wertheimer". The signature is fluid and cursive, with a large, sweeping flourish over the name.

Lewin Wertheimer
Chair, Rogue Machine Theatre Board of Directors

Become a Founder Circle Member

We are establishing a group to advance our vision to create and produce the most relevant, engaging, and exceptional regional theatre today. For theatre to survive and thrive, we must develop and nurture the diverse voices of a new generation, who will speak to and for the emergent audience of the 21st century.

As a Founder, you will support the most remarkable theatre being produced today. This work speaks to the lives we live now and makes the art of theatre vibrant and necessary. With a range of exclusive benefits at various giving levels, we invite you to participate, bringing enhanced stability to Rogue Machine and bringing you unparalleled advantages. By joining the Founder Circle, you have access to intimate and exclusive events year-round, as well as other special benefits for your five-year commitment. We enthusiastically look forward to your reply, and to welcoming you as a member of our Founder Circle.

To join the Founder Circle or learn more, please email Development Director Marni Ayers at marni.ayers@roguemachinetheatre.com or call (855) 585-5185

Our Donors

Thank You to Our Supporters!

Contributions from August 1, 2014 - February 1, 2016

GRANT & FOUNDATION SUPPORT

American Theatre Wing - National Theatre Company Grant
Annenberg Foundation
Attias Family Foundation
Bloomberg Philanthropies
City of Los Angeles Cultural Affairs Department
George Lichter Family Fund
Hamilton Street Foundation
Richard Munroe Foundation
Henry Murray Fund for New Plays
The Los Angeles County Arts Commission
Nancy E. Barton Foundation
Rosalinde and Arthur Gilbert Foundation
The Rosenthal Family Foundation
Sachs Family Fund
The Shapiro Foundation
U.S. Bank

FOUNDER CIRCLE

Platinum Circle (\$5,000+ Annually)

Anonymous (2)
Jean Craig
Irving & Gail Weintraub
The Rosenthal Family Foundation
(Rick Rosenthal & Nancy Stephens)

Silver Level (\$1000+ Annually)

Dr. Joanna Lipari
Marni Ayers

INDIVIDUAL DONATIONS

\$5,000+

Anonymous (2)
Marcy Carsey
Jean Craig
John Flynn & Ann Bronston
George Lichter Family Fund
(John Lichter & Linda Stonerock)
Richard Munroe Foundation
Bruce & Linda Porter
The Rosenthal Family Foundation
(Rick Rosenthal & Nancy Stephens)
Irving & Gail Weintraub
Lewin Wertheimer

\$1,000 - \$4,999

Attias Family Foundation
Orson Bean & Alley Mills
William Brady & Marni Ayers
Anne Gee Byrd
Adrea Caren
Cynthia Comsky
Hannah Cox
Maureen Craig &
Glenn Goldberg
Chris Craig
Terry Davis
Elina de Santos
Jeffrey & Kirsten Dermer
Michelle Eskin
Patricia Glaser
Jerry & Adi Greenberg
Hamilton Street Foundation
(Mr. Lawrence Goldstein & Mrs. Rosa Goldstein)
Paula Holt
Jennifer Howard &
Robert Schwentke
Amber Ireland

\$1,000 - \$4,999 continued

Mason Jones & Susan Fitzgerald
Jeffrey Karoff & Nora Dvosin
Dr. Joanna Lipari
Allan Mayer & Renee Vogel
David Morisaki & Callista Card
John Morrissey
Jon Neustadter
Penny Orloff
James Rasmussen & David Rinehart
Gary Rosen & Holly Goldberg Sloan
David A. & Karen Richards Sachs
Tom Safran
Michael Schwartz &
Stephanie Kerley Schwartz
Patricia Shanks
Tucker Smallwood
Neely & Larry Swanson
Ari & Martha Swiller
Rita Taggart
Russi Taylor
Maxine Warner
Bruce Wright & Nathan Clum

\$250 - \$999

Anonymous (2)
Matthew & Kristen Aldrich
Dylan & Dean Baquet
Jennifer Barry
Adam Bester
Michael Bierbauer
Ron Bottitta & Holly Fulger
Ann Buck
Cate Caplin
Cynthia Chapman
David Chertock & Melissa Herman

\$250 - \$999 continued

Steve Connell
Erin P. Craig
Jaz Davison
Jason Delane
Naren & Ashli Desai
Susan Dexter
Daniel Duling
Peter Dvorak
Matthew Elkins
Kate & William Forward
Steffen & Deborah Foster
James Freed
Mark Freund & Trice Koopman
John Gray
Jerry A. & Adi Greenberg
Debra Greib
Mark Gurvitz
Kymberly Harris
Melissa Herman
David Higlen &
Marilyn Renton Gay
Richard Katz
Kevin Kilner &
Jordan Baker-Kilner
Trevor King
Steven Klein & Kristine Penner Klein
BA Knutson
Jason Lee
Beverly Leech
Robert Leventer
Kay Lieberman
Lynn Lobban
Kim & Marsha Lovett
Kareen Martin
Christina Lynch
David A. Mauer

\$250 - \$999 continued

Patrick & Eva Mauer
 Lillah McCarthy
 Myron Meisel
 Rob Mersola
 Robert D. Moore
 Ann Noble
 Brian Norris
 Dottie O'Carroll
 Tony Pasqualini & Sarah Brooke
 Joan Pearce Research Associates
 Penny Peyser
 Meg Liberman Pohl
 Gary & Fre Pokoik
 Lee Ramer
 Stephanie Ramer
 Joey & Anthony Rich
 Edwin Robinson
 Whitney Sander
 Carol Schoen
 Gabriel Simon
 Sold Out Crowd
 Mark & Judith Taylor
 Judith Vida-Spence
 F. Norbert Weissner & Tandy Parks
 Lee & Susan Wertheimer
 Mary Westerman
 Jack & Sandra Williams
 Chase Winton
 Harriet Zaretsky

\$100 - \$249

Anonymous
 Tony Amendola
 Eloise Appel
 Mary Appleton
 Deborah Barylski
 Frawley Becker
 David & Nessa Bernstein
 Danielle Bloch
 Jim Boelsen
 Alexandra Rebecca Borys
 Stephen Burleigh
 K Callan
 Arline Chambers
 Nancy Linehan Charles
 Nicki Closset
 Michael Cohen
 Ry & Susan Cooder
 Jed Dannenbaum
 Ron DiCostanzo
 Robb Dodd
 AnnaLisa Erickson
 Suzanne Ford
 Ben & Anna Forkner
 Gary Freund
 Ellen Friedman

\$100 - \$249 continued

Sandra Gooch
 Arye Gross
 Eugene Heller
 Emily Hertzberg
 Richard Martin Hirsch
 Stephen J. Holowid
 Susan Moss Homola
 A. Huston
 Gary Ireland &
 Elizabeth Zarlengo
 Linda Janger
 Melody Kanschat
 Martin Leffler
 Martin Leon of Alisal Builders Corp
 Brian Letscher
 David Linde &
 Felicia Rosenfeld
 Paul Linke
 Michael Lurey
 Christina Lynch
 Dennis Madden
 Doe Mayer
 Allan Miller
 John & Ann Moore
 David & Arlene Nelson
 Arianne Neumark
 Anna Nicholas
 Katherine Odesmith
 Laurie Okin
 Tom Ormeny & Maria Gobetti
 Nina Paskowitz
 S. E. & Rebecca Perry
 Penny Peyser
 Julianne Phillips
 Annie Potts
 Thomas Proctor
 Stephanie Ramer
 Anne Roberts
 Gail Rogers
 Barbara Schufreider
 Michael Seel
 Tom Shima & Barbara Kallir
 Daniel Shoenman
 Calvin Sloan
 Maxwell Sloan
 Doug Stevenson
 Peter Stoughton
 Kathryn Swink
 Agnes Thaler
 Shane Valentino
 Mark & Susan Yackley

\$25 - 99

Anonymous
 April Alexander
 Sheryl Baron
 Jay Bevan
 David Dean Bottrell
 David Bronston & Patricia Brown
 Channing Chase
 Donna Corwin
 Joan & Tom Dunsmuir
 Edward Edwards
 Cynthia Ettinger
 Mona Field
 Tami Finkbeiner
 Laura Gardner
 Betsy Hall & Sandy Keaton
 Ebbins Harris
 Martha Hertzberg
 Dan Hoskins
 Emma Jacobson-Sive
 Jeffrey Janger
 Ariana Kaiser
 Joel Kimmel
 Marvin Klein
 Gary Lamb
 Susan Lang
 Laurie Lathem
 Susan Lefkowitz
 Peter Levin
 Simon Levy
 Michael Mantell
 Vince Melocchi
 Michael Michetti
 Gail Myers
 Michael Myers
 Robert Myers
 Brian Nolan & Kadee Appleton
 Peggy Painton
 Rikki Orloff
 Scott Paulin
 Peggy Painton
 Philippe Perebinosoff
 Mary Portser
 Jennifer Rowland
 Rita Rubin
 Arthur Scotti
 Nadine Semer
 Peggy Shinner
 Elliot Shoenman
 Sherry Sonnett
 Janet Staples-Edwards
 Shula Udoff
 Diane Williams &
 Jeffrey A. Doryland
 Michelle Young

To find out how you can help or if you believe our records are inaccurate, please contact us at (855) 585-5185 or email managing.director@roguemachinetheatre.com.

Rogue Machine gratefully acknowledges these contributions that help cover the day-to-day expenses of a professional, non-profit theatre company.



More Ways to Support Us!

Shop at Ralphs!



Thank you for your ongoing support of Ralphs and Rogue Machine!
Continue to shop and donate to Rogue Machine for FREE.

Ralphs is committed to helping communities grow and prosper by contributing more than \$220 million annually to support local communities, including Rogue Machine. Step-by-step registration instructions can be found online at Ralphs.com – just click Register. If you are already a member, you must register annually, starting this September 1. Rogue Machine (NPO # 92241) will then receive the benefits of your shopping!

amazon.com

Shop at Amazon!

Go to Amazon.com via our link on the front page of our website and buy ANYTHING! Rogue Machine Theatre will get a percentage of what you spend, and it costs you nothing extra!

GoodSearch

Shop or Search at Good Search!

Donate Online at RogueMachineTheatre.com

Take a Seat!



Join us in our Seat Campaign and leave your mark in our theatre. A plaque will be placed prominently on the seat commemorating your love of theatre or honoring a loved one.

Please contact Co-Artistic Director, Elina de Santos,
at elinadesantos@gmail.com for more information.



21337 PACIFIC COAST HIGHWAY
MALIBU, CA 90265
(310) 456-8000
WWW.TAVERNGRILLS.COM



Rant & Rave happens one Monday night a month and is a Standing-Room-Only Sensation - *it's always fresh, funny & powerfully moving.*

Upcoming Dates: March 14th and April 11th

Board of Directors

Lewin Wertheimer, *President/Chair*

Jean Craig, *Vice President*

David Morisaki, *Secretary*

Jeffrey Dermer, *Treasurer*

Callista Card

Hannah Cox

John Perrin Flynn

Paula Holt

Penny Orloff

Neely Swanson

Advisory Board

Darrell Brown

Sheldon Epps

Hany Haddad

Annie Potts

Oz Scott

Production Team

John Perrin Flynn ⁺	<i>Artistic Director</i>	Stephanie Kerley Schwartz ⁺ ...	<i>Resident Designer</i>
Elna de Santos ⁺	<i>Co-Artistic Director</i>	Tim Cummings	<i>Literary Manager</i>
Rick Bernstein	<i>Managing Director</i>	John Pollono* ⁺	<i>Rant & Rave Producer</i>
Matthew Elkins ⁺	<i>Producing Director</i>	Tracie Lockwood ⁺ ...	<i>Around-the-Clock Producer</i>
Amanda Mauer ⁺	<i>Production Manager</i>	Ramón Valdez.....	<i>Membership Coordinator</i>
David A. Mauer ⁺	<i>Technical Director</i>	Judith Borne ⁺	<i>Publicist</i>
Jen Pollono ⁺ ...	<i>Off-the-Clock Producing Director</i>	Marni Ayers	<i>Development Director</i>
		Sherry Sonnett	<i>Dramaturg's Table Director</i>

For a complete list of our members, visit RogueMachineTheatre.com

Mission Statement

Rogue Machine only produces world premieres of new plays, primarily by Los Angeles based playwrights, and plays new to Los Angeles, including American, West Coast, and Regional premieres of significant contemporary theatrical works. Rogue Machine seeks to be a theatre of ideas and imagination, a theatre which mirrors and examines contemporary culture, a theatre which nurtures contemporary playwrights, and a theatre whose work continually engages the community and creates a dialogue which resonates after the curtain closes.

Rogue Machine also considers building an audience for the future to be an important part of its mission and seeks to attract and serve a younger, more diverse Los Angeles adult audience.